

Import of Olerup QTYPE11® run templates for the QuantStudio™ 6,7 and ViiA™ 7

BACKGROUND

This is a brief guide on how to import the Olerup QTYPE run templates to setup the Applied Biosystems QuanStudio 6, 7 and ViiA 7 instruments for the Olerup QTYPE11 kit using the QuantStudio Software v1.1, v1.2 and v1.3.

INSTRUMENT STARTUP AND LOGIN

1. Switch on the instrument
2. Start the QuantStudio Real-Time PCR software

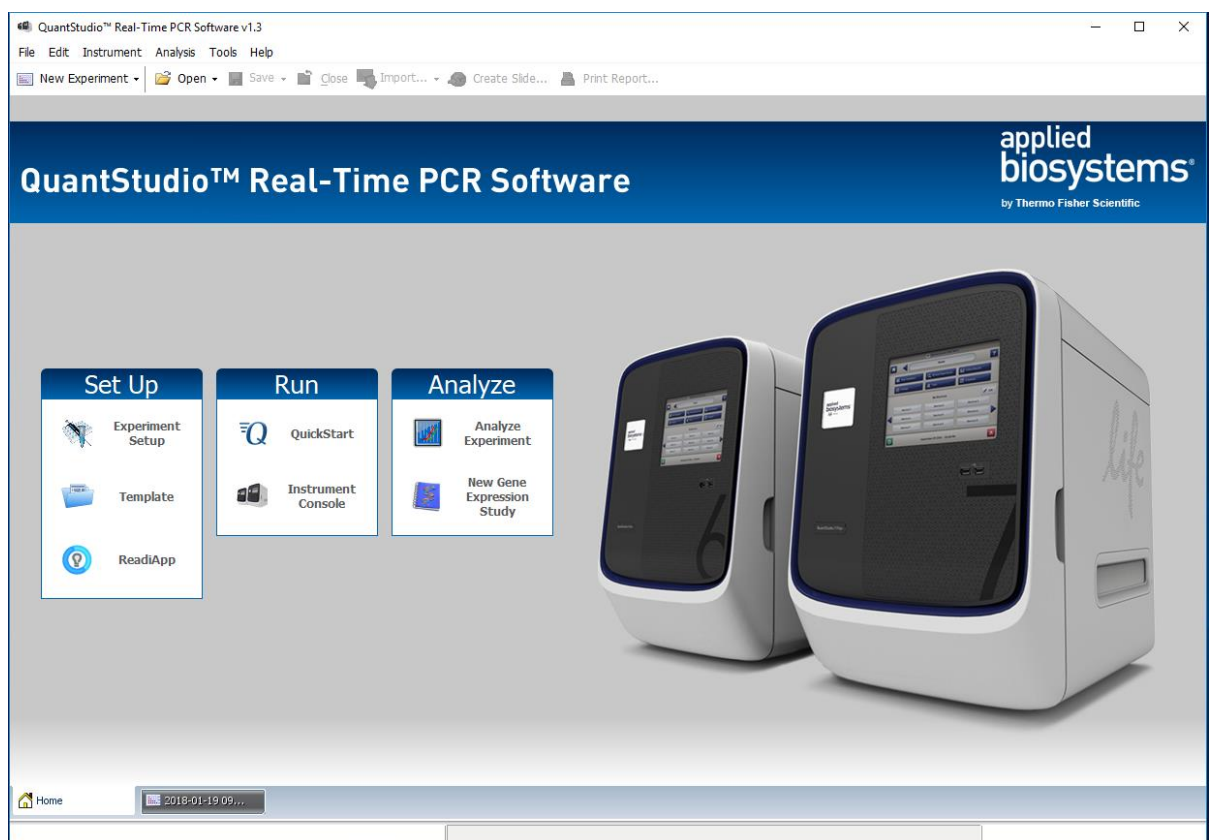


Figure 1: The QuantStudio Real-Time PCR Software start screen.

IMPORT THE OLERUP QTYPE PROTOCOL RUN TEMPLATE

1. From the main screen (Figure 1) click on the arrow behind the “Open” button and select ‘Open Templates’

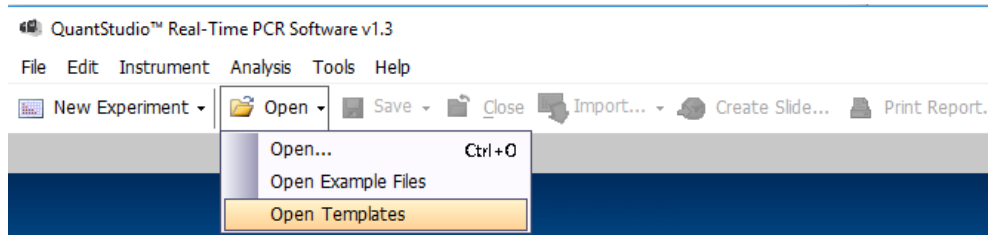


Figure 2: Open the Olerup QTYPE template.

2. Locate the Olerup QTYPE run template on the computer and select open

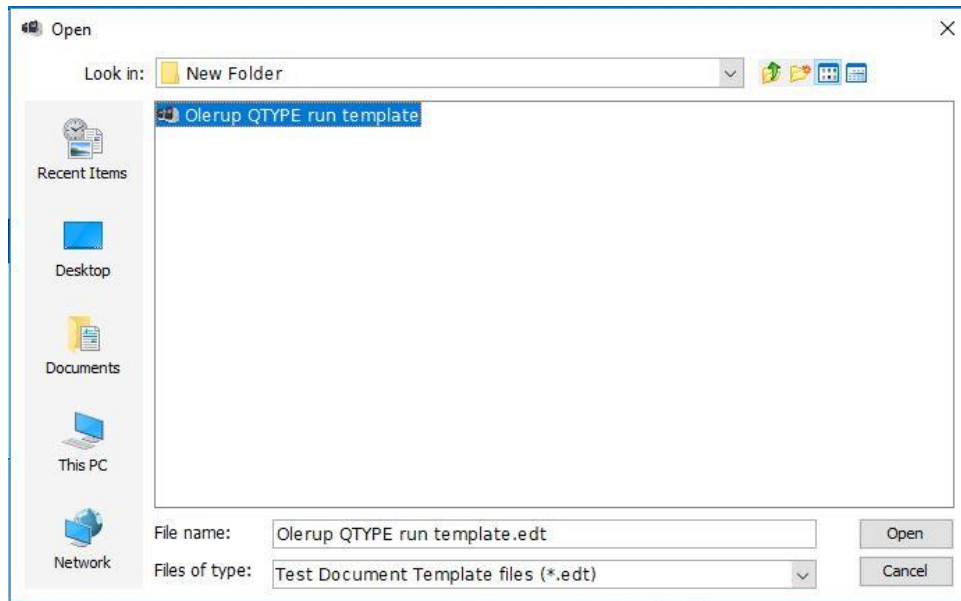


Figure 3: Locate and open the Olerup QTYPE template.

3. Ensure that the correct instrument type is selected based on the instrument



Figure 4: Make sure the correct instrument type is selected based on the instrument the laboratory has.

4. Navigate to 'Export' (menu is on the left side of the screen)
5. After each run, the software will auto-export the Olerup QTYPE results into a predefined folder at the end of each run in a format that SCORE 6 will recognize. Click on 'Browse' and select the folder to export the raw data to.

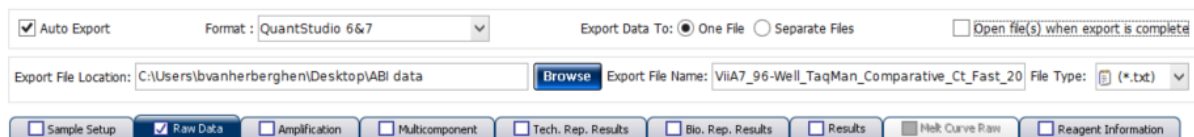


Figure 5: The export settings are predefined. The user shall define the folder to which to export the raw data,

6. To save these changes to the template, click on the arrow behind the 'Save' icon and select 'Save as template'. Navigate to the folder where the templates are installed. There is a subfolder for each instrument.

Import of Olerup QTYPE11 run template for the QuantStudio 6, 7 and ViiA-7 v1.0

For research use only.

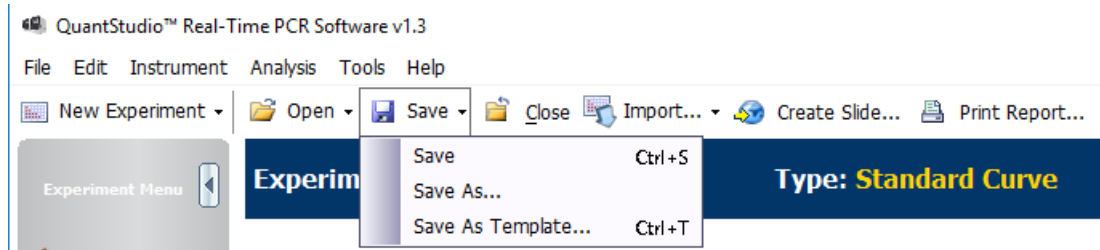


Figure 6: Save the Olerup QTYPE run template.

7. Save the template in the folder of the instrument type that is being used (C:\Program Files (x86)\Applied BioSystems\QuantStudio Real-Time PCR Software\templates). Ensure the template has the correct name *ie* Olerup QTYPE run template.

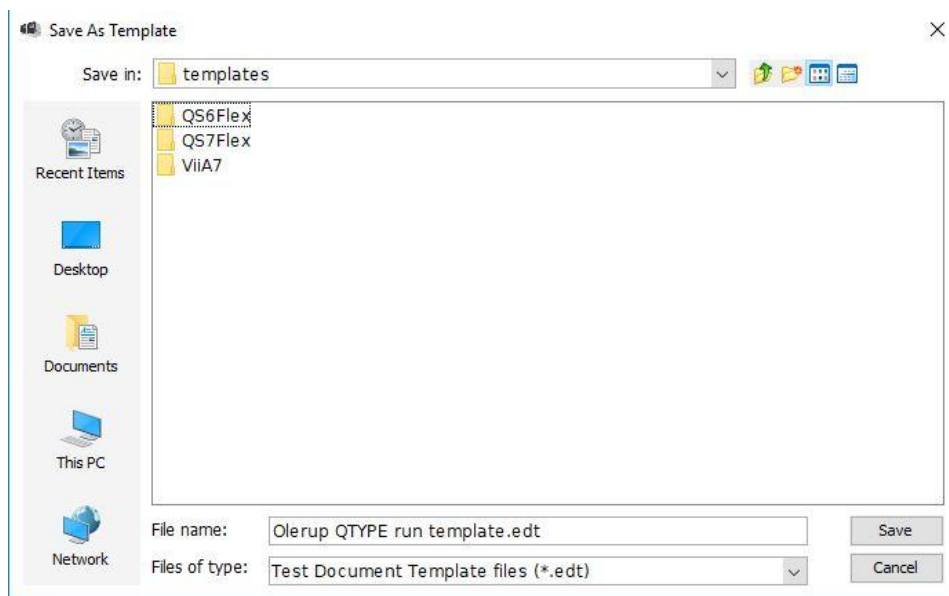


Figure 7: Select the correct folder to which to save the template.

START RUN FROM SAVED TEMPLATE

1. To start a run from the saved Olerup QTYPE template, click on the arrow behind “New experiment” on the start screen and select ‘New experiment from template’.

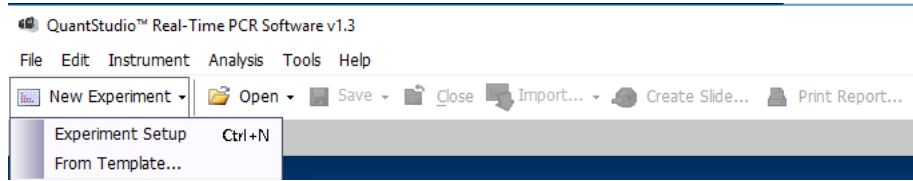


Figure 8: Create a new experiment from the Olerup QTYPE run template.

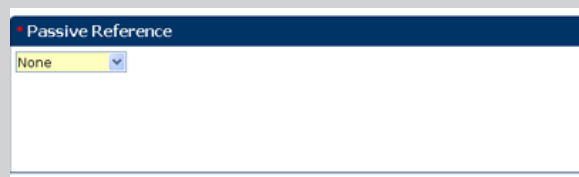
2. Select the Olerup QTYPE template.
3. Name the run file accordingly. Ensure to include the kit lot number as well as an instrument identifier in case the laboratory uses several real-time instruments for Olerup QTYPE.

The passive reference dye setting in v1.2 of the software has a bug. Upon import of the template, the software automatically defaults the passive reference dye to ‘ROX’. This needs to be changed to ‘None’ for each run.



NOTE!

1. On the Define screen (select the tab on the left side of the screen) change the passive reference to ‘None’



4. Navigate to the ‘Run’ screen and start the instrument run

QUICKSTART OLERUP QTYPE RUN

1. Load the plate on the instrument
2. Open the QuantStudio Real Time PCR software
3. Under the 'Run' menu, select 'QuickStart'



4. Actively select the instrument by clicking on it



5. Name the experiment, ensure to include:
 - o Sample name
 - o Kit lot number
 - o Instrument identifier in case several instruments are used
6. Choose the location to save the raw data

7. Browse to the correct location and select the 'Olerup QTYPE Run Protocol' under 'Select Experiment Template'

8. Start the run
9. The data will auto-export to the pre-defined folder



CAUTION!

The Quickstart option can only be used with the QuantStudio software v1.1 and v1.3.

Due to a bug in v1.2, the software loads the default passive dye 'Rox' when the template is imported. When using v1.2, the run should be started from 'New experiment from template' as described above.